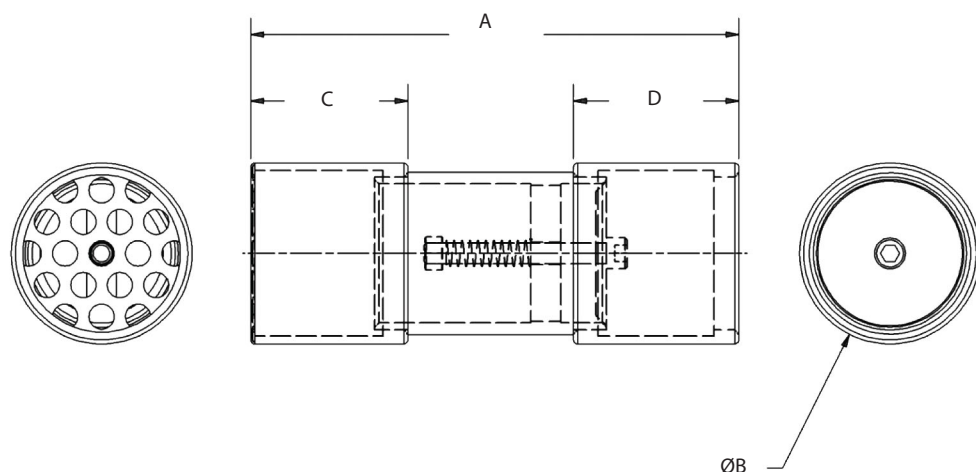


The Republic Relief Valve is constructed of zinc-plated mild steel and is designed to protect blowers from overpressure in a blocked-off mode during vacuum or pressure operation. Each valve can be set by the customer to the desired vacuum or pressure level. Commonly used with Regenerative Blowers, Positive Displacement Blowers, and Rotary Vane Pumps.



Dimensions

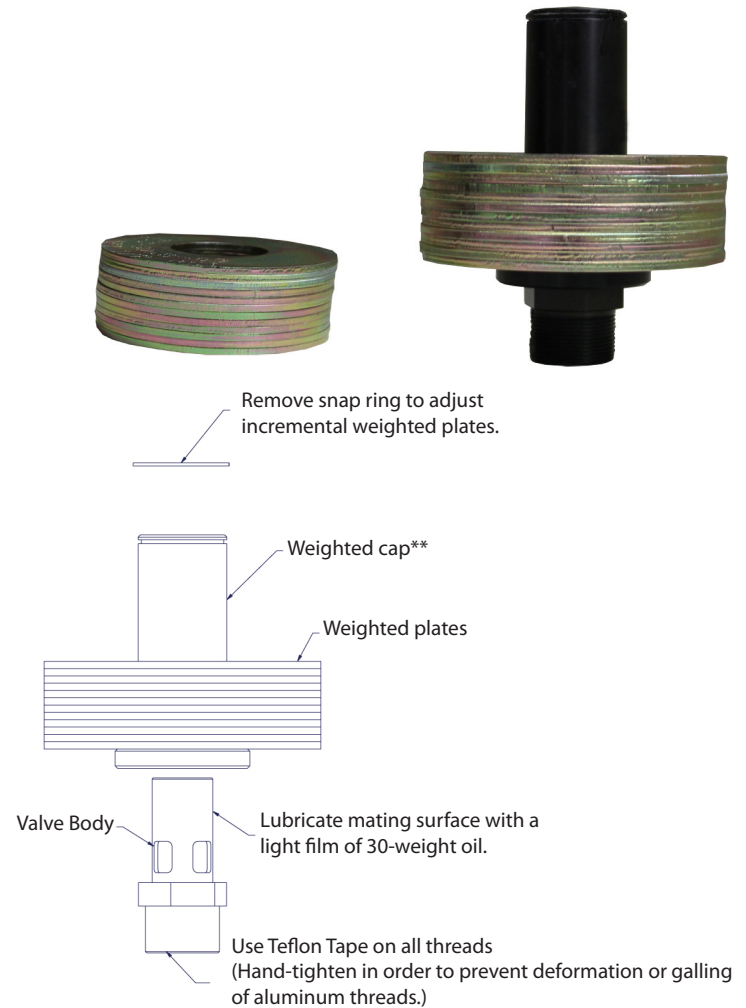
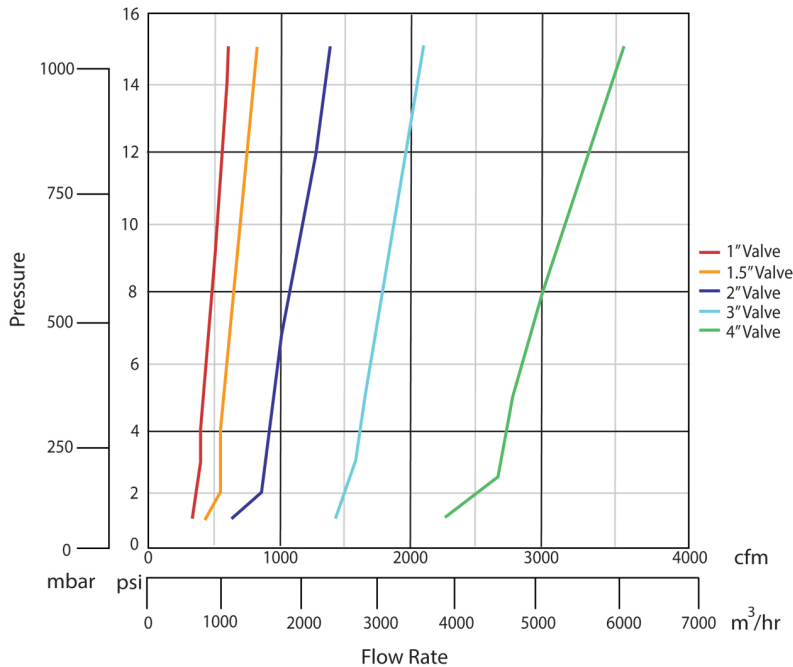


Size (FNPT)	Part Number	A	ØB	C	D	Weight
1.25	200-0525	6-1/8 in	2-1/8 in	2 in	2-1/16 in	2 lb
		155 mm	54 mm	51 mm	52 mm	0.9 kg
1.50	200-0510	6-1/8 in	2-1/8 in	2 in	2-1/16 in	3 lb
		155 mm	54 mm	51 mm	52 mm	1.4 kg
2.00	200-0516	7-3/8 in	2-3/4 in	2-3/8 in	2-1/2 in	3 lb
		187 mm	70 mm	60 mm	64 mm	1.4 kg
2.50	200-0518	7-3/8 in	3-1/4 in	2-1/2 in	2-1/2 in	4 lb
		187 mm	83 mm	64 mm	64 mm	1.8 kg
3.00	200-0520	6-1/2 in	3-11/16 in	2-7/16 in	2-1/2 in	8 lb
		165 mm	94 mm	62 mm	64 mm	3.6 kg
4.00	200-0527	6-1/2 in	3-11/16 in	2-7/16 in	2-1/2 in	10 lb
		165 mm	94 mm	62 mm	64 mm	4.5 kg

The Republic Weighted Relief Valve is constructed of hard anodized aluminum and is designed to protect blowers from overpressure in a blocked-off mode. Each valve has available either 0.5 PSI incremental weights or 1.0 PSI increment weights. To adjust, remove snap ring, then add or remove weight plates.

These valves are available in 1, 1.5, 2, 3, or 4 inch sizes and have standard NPT connections for carefree operation and minimal maintenance.

Performance



Part Number	A (NPT)	B	C	D	E	F*
210-3085A (body)	1.0"	6-3/4 in	-	2-1/4 in	7-3/4 in	8-27/50 in
210-3085-03 (1/2 psi weight)		171 mm	-	57 mm	197 mm	217 mm
210-3086A (body)	1.5"	7-1/10 in	-	2-1/4 in	7-3/4 in	8-27/50 in
210-3086-03 (1/2 psi weight)		180 mm	-	57 mm	197 mm	217 mm
210-3068A (body)	2.0"	6-3/4 in	9-13/100 in	2-31/100 in	7-81/100 in	8-61/100 in
210-3068-03 (1/2 psi weight)		171 mm	232 mm	59 mm	198 mm	219 mm
210-3068-05 (1 psi weight)						
210-3069A (body)	3.0"	10-13/25 in	14-9/25 in	4-22/25 in	8-7/10 in	9-83/100 in
210-3069-03 (1/2 psi weight)		267 mm	365 mm	124 mm	221 mm	250 mm
210-3069-05 (1 psi weight)						
210-3070A (body)	4.0"	13-13/25 in	18-47/100 in	3-17/50 in	9-83/100	10-47/100 in
210-3070-03 (1/2 psi weight)		343 mm	469 mm	85 mm	250 mm	266 mm
210-3070-05 (1 psi weight)						

*Dimensions not shown. Denotes the maximum height when valve is fully open.

Valve must be mounted in an upright and vertical position.

**Weighted Cap is weighted at 1 PSI and should be considered when determining number of plates needed.

